



Center for Professional
Development

April 2025 Monthly Webinar

Project Management Community of Practice
April 24, 2025



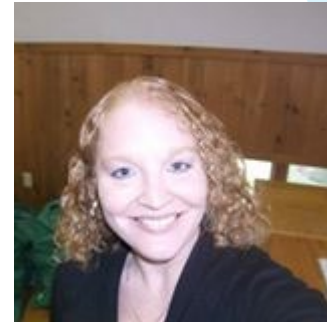
What is the Project Management Community of Practice?

- This Community of Practice is for Project Management Professionals inside and outside of the SUNY community. We aim to create a space where project management professionals can share best practices, initiate discussions around project management concepts and learn more about project management and topics that affect project management.
- We look to foster discussion and sharing through the following:
 - Monthly webinars on PM topics and concepts
 - Discussion posts from moderators and members
 - Polls
 - Training opportunities for those in a PM centered position



Project Management CoP Moderators

- Kris Lynch
 - SUNY CPD Technical Program Manager
 - 315-214-2428
 - krista.lynch@suny.edu
- Paula Cancro
 - Dean of Online Education and Instructional Design,
The College of Westchester (CW)
 - pmcancro@gmail.com





April Monthly Webinar Speaker

For our April 2025 Monthly Webinar, we will be watching some videos on Imposter Syndrome and discussing the impact that it has on us and our project management careers/tasks.

Even after writing eleven books and winning several awards, Maya Angelou couldn't escape the doubt that she hadn't earned her accomplishments. This feeling of fraudulence is extremely common. Why can't so many of us shake feelings that our ideas and skills aren't worthy of others' attention? Elizabeth Cox describes the psychology behind the imposter syndrome, and what you can do to combat it.



Upcoming Monthly Webinars

Speakers and topics for upcoming webinars to be announced in the coming weeks in the SUNY PM Listserv. Save the dates for these upcoming webinars:

- We will not have a May CoP Meeting due to CIT happening at SUNY Oneonta during our regular time. Come join us! [CIT – SUNY Oneonta](#)
- June 26th 11:00 AM Eastern – PMP CoP Book Club Meeting!
- July 24th 11:00 AM Eastern – Topic Details to Follow



Center for Professional
Development

Questions?

A large, faint, light blue SUNY logo is positioned in the bottom right corner. Above it, there are several overlapping light blue circles of various sizes, creating a decorative graphic element.