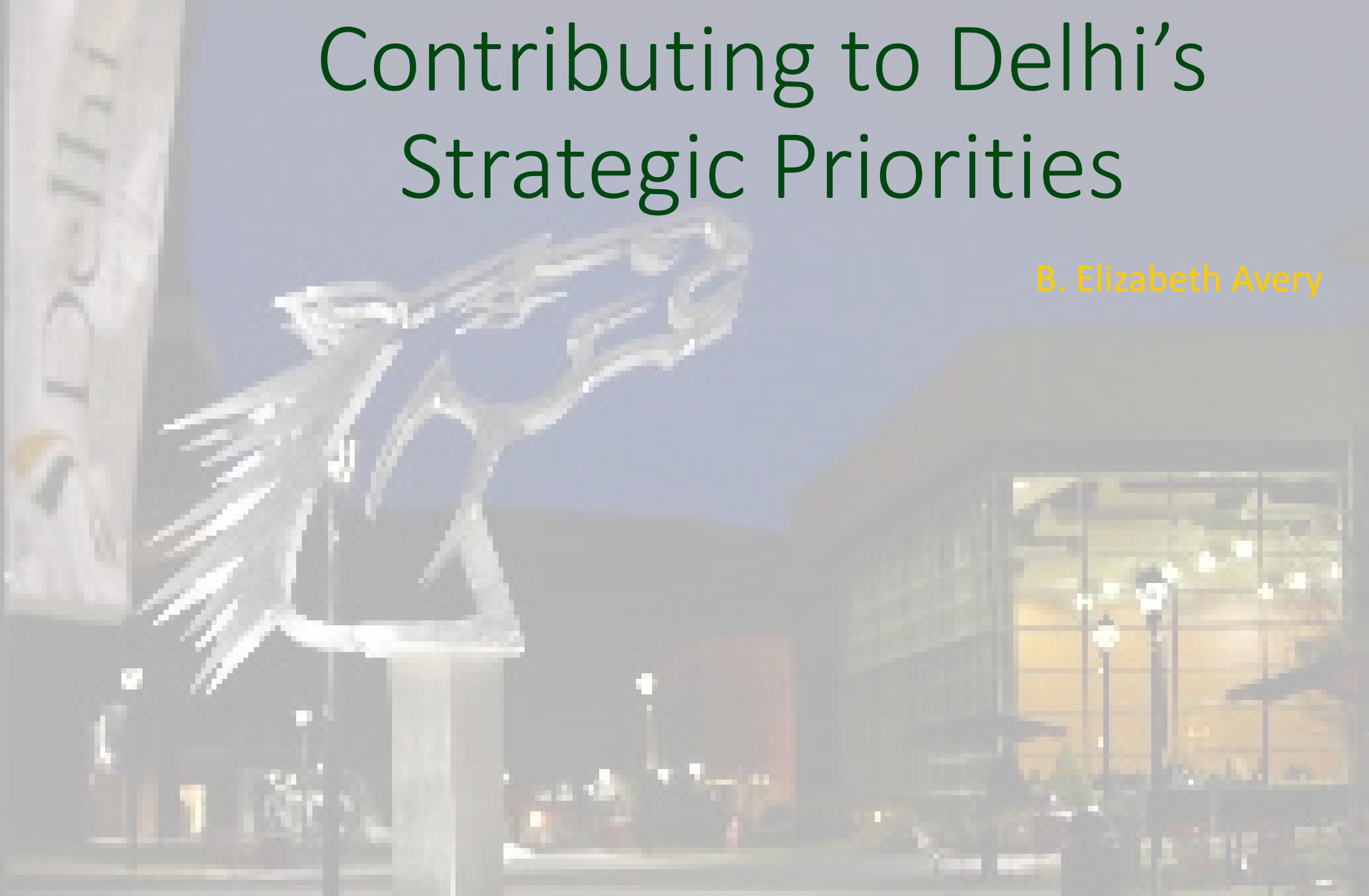


Contributing to Delhi's Strategic Priorities

B. Elizabeth Avery



Philosophy and Vision

- The student is the most important person at SUNY Delhi
- SUNY Delhi Transforms Lives



Investing in People:

Fostering a welcoming, safe, respectful, fun and inclusive community.

- Search each semester for Help Desk Assistant Students
- Interview, Select, Train, Develop, Evaluate, Follow-up



Investing in Facilities:

Providing students, faculty, and staff with optimal living and learning environments.

- Monthly Training Hour
- Replacement and Repair of Lab Equipment



Academic Programs:

Innovating, delivering, and sustaining relevant and cutting-edge curricula.

- Provide students, faculty and staff with after hours support
- Support hands on equipment, kept up to date



Enrollment:

Engaging activities that recruit, retain and graduate our students.

- Participation in on-campus job fairs
- Recruit new students



Student Potential:

Developing and inspiring students to reach their full potential.

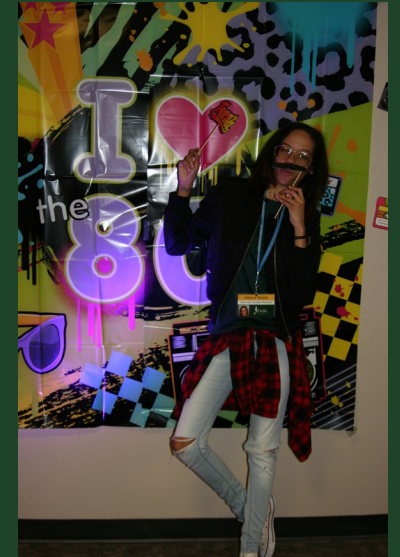
- Employ students of different majors
- Provide training that benefits student's future



Storytelling:

Advancing and participating in efforts that positively elevate the campus profile.

- SUNY Delhi – small, close-knit community
- Student activities, increase visibility of department



Conclusion

- Simple philosophy is effective
- Continuous development and assessment of student employment





Questions?

